

Data Center Pre-terminated Patch Panel System

Patch Panels
Plug & Play Installation

10G + Gigabit



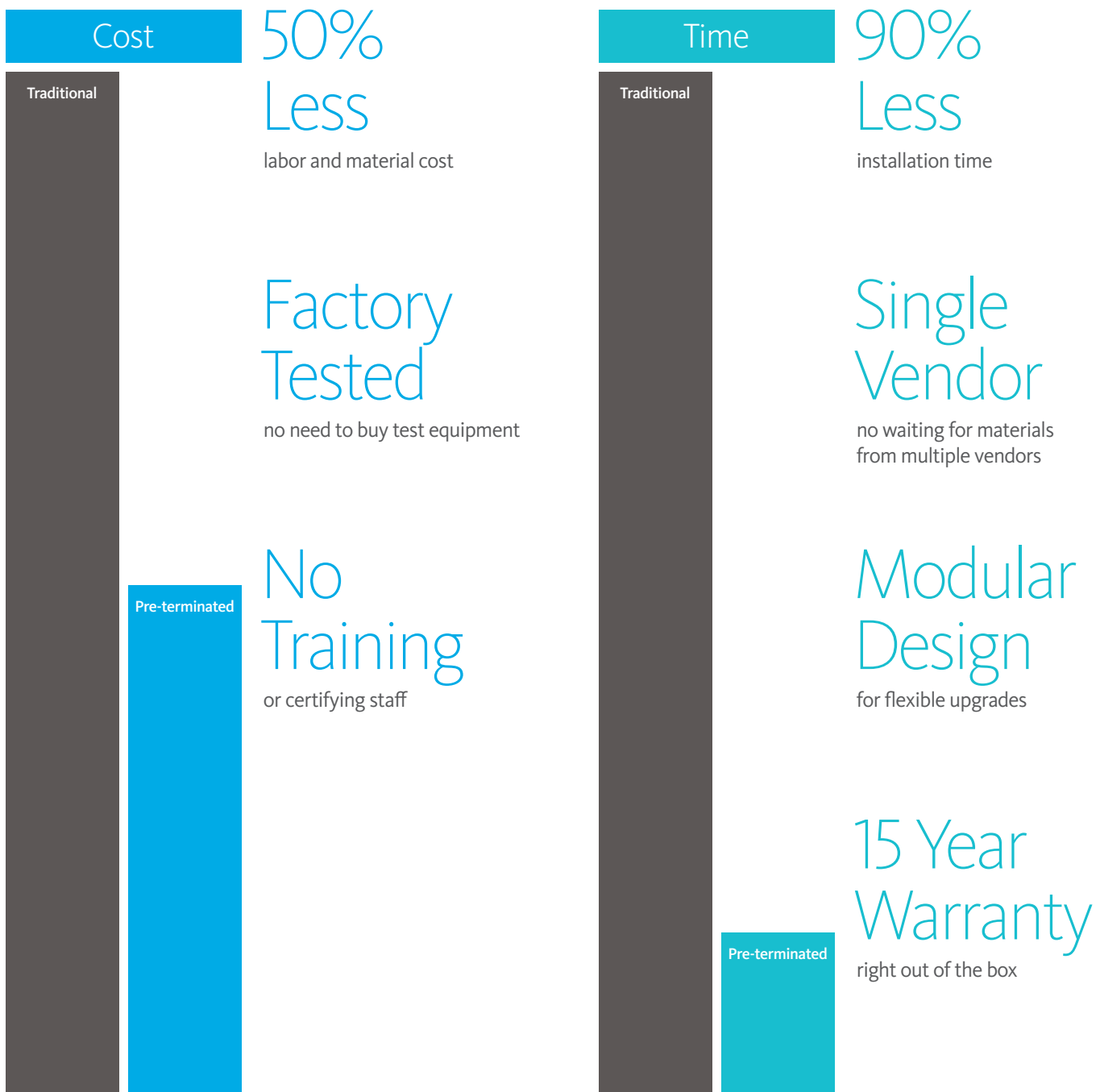
Patch Cords
Bundled + Labeled

CABLESYS[®]
Cabling Systems Simplified

Our Mission

At Cablesys, our mission is to simplify cabling systems for your data center projects. We take complex copper and fiber systems and make them **EASY** to order and **EASY** to install. Our systems are assembled in California according to your specification, come with a 15 year end-to-end performance warranty, and are ready to go right out of the box.

Traditional Cabling System vs. Pre-terminated Cabling System



Performance

Copper



page 4

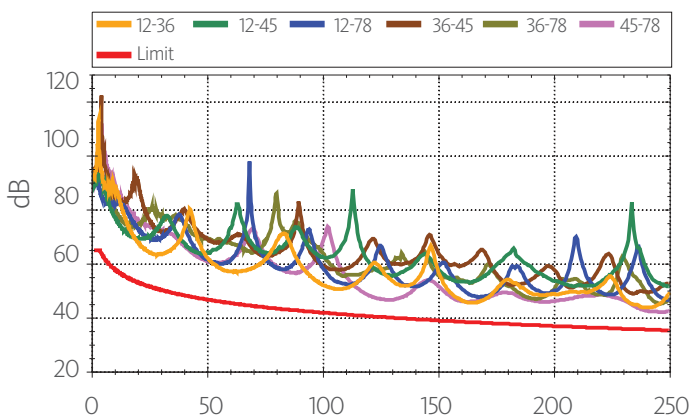
Fiber



page 12

Tested up to 5.7dB Headroom

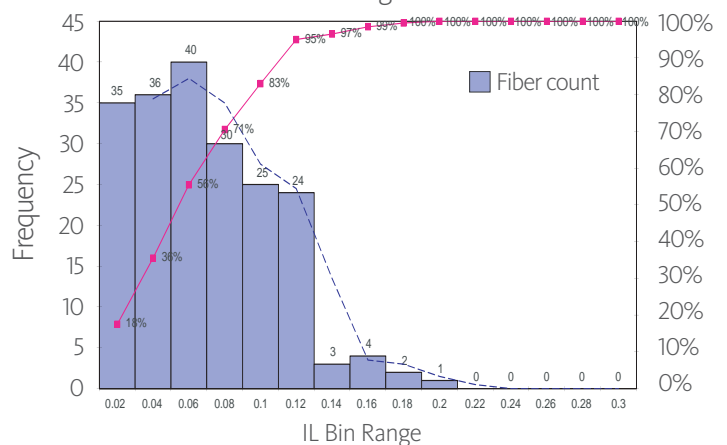
NEXT @ Remote



- CAT 6 UTP tested per TIA® Permanent Link specification
- Complies with ANSI/TIA-942-A-1 standard for data centers
- Exceeds ANSI/TIA 568-C.2 industry standard
- UL® listed and ETL® verified

Tested up to ≤ 0.1 dB Insertion Loss

IL Histogram



- OM3 multimode fiber tested per TIA® specification
- 83% tested ≤ 0.1 dB, 99% tested ≤ 0.16 dB
- Exceeds ANSI/TIA 568-C.3 industry standard
- Beats the industry average of 0.75 dB
- Complies with IEEE 802.3 and IEC-60793-2-10 standards

Copper

Pre-terminated Plug & Play Patch Panel Cabling System



Features

Pre-terminated

- CAT 6A, CAT 6, and CAT 5e
- To T-568-A or T-568-B wiring

Bundled

- With binding yarn
- Six (6) cables per bundle

Labeled

- On cables and bundles
- To your specification

Tested

- To ANSI/TIA 568-C.2 industry standard
- 15 year end-to-end performance warranty

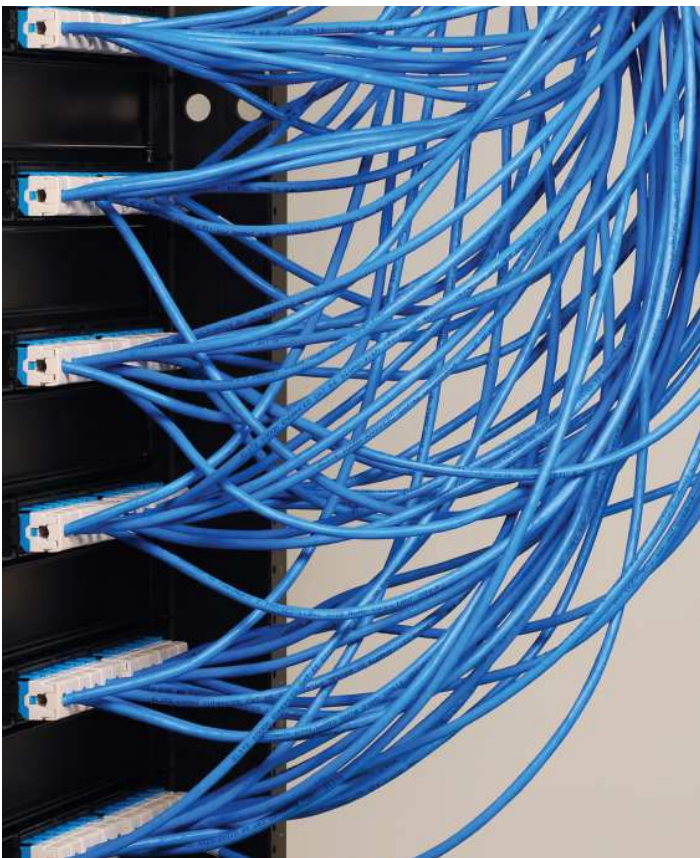
Kitted

- Pre-sort products into kits so they are easy to allocate
- To your specification



Ideal locations:

- Enterprise data centers
- Colocation facilities
- Server farms
- Cloud storage networks
- Telecommunication rooms



Traditional Cabling System



Pre-terminated Cabling System



Bezel to Bezel

For connectivity between patch panels.

Model # PCA

Bezel to Modular Plugs

For connectivity between patch panel and a network switch.

Model # PCB

1. Choose Connectivity

Bezel to Bezel

Bezel to Modular Plugs

Bezel to Mobile Box

Bezel to Outlet Box

Model #

PCA

PCB

PCC

PCC

2. Choose Cable Rating

Riser-rated CMR

Plenum-rated CMP

Consider fire rating of material and airflow. Most data center environments can use riser-rated cable (CMR). Use CMR in vertical settings, such as cable running between floors through cable risers. Use plenum-rated cable (CMP) in raised flooring systems, drop ceilings, and air handling ducts. Always consult with city or building authorities for the latest code before deciding the type of cable.



Bezel to Mobile Box

For connectivity between a patch panel and mobile box outlets.

Model # PCC

Bezel to Outlet Box

For connectivity between a patch panel and mobile box outlets.

Model # PCC

3. Choose Bandwidth

10G CAT 6A Shielded (FTP)
10G CAT 6A Unshielded (UTP)
1G CAT 6e Unshielded (UTP)
VoIP CAT 5e Unshielded (UTP)

Consider what active equipment or devices will be supported throughout the entire network. Use Foiled Twisted Pair (FTP) in environments with high Electromagnetic Interference (EMI) or Radio Frequency Interference (RFI). Use Unshielded Twisted Pair (UTP) in environments with low interference.

4. Choose Length

Standard (25, 50, 75 and 100 feet)
Custom (10 to 295 feet)

Consider accessibility to active equipment and the layout of the room when measuring, then round up to the nearest foot. We pre-build and stock cable assemblies in standard lengths to help reduce our lead time and ship orders faster. We also custom build up to 295 feet per TIA® standard.

Installation Step 1.

Install bracket panel. The panel fits 19 inch rack mount widths.



Step 2.

Open package.



Step 3.

Snap in bezels. Done!



Cable Management Brackets

- Three (3) and five (5) inch depths
- Supports front and rear cables
- Fits 19 inch rack mount widths



Support Rear Cable

Use a five (5) inch bracket to support cable on the rear of the patch panel.



Bundle6™ Patch Cords

Model # BC6

We bundled and labeled six copper patch cords to save you time and make patching easier.



1. Choose Bandwidth

10G CAT 6A Shielded (FTP)

1G CAT 6e Unshielded (UTP)

VoIP CAT 5e Unshielded (UTP)*

2. Choose Length

Standard (7, 10, and 15 feet)

Custom (5 to 295 feet)

*Available in custom length only





Labeled

To easily identify cables.

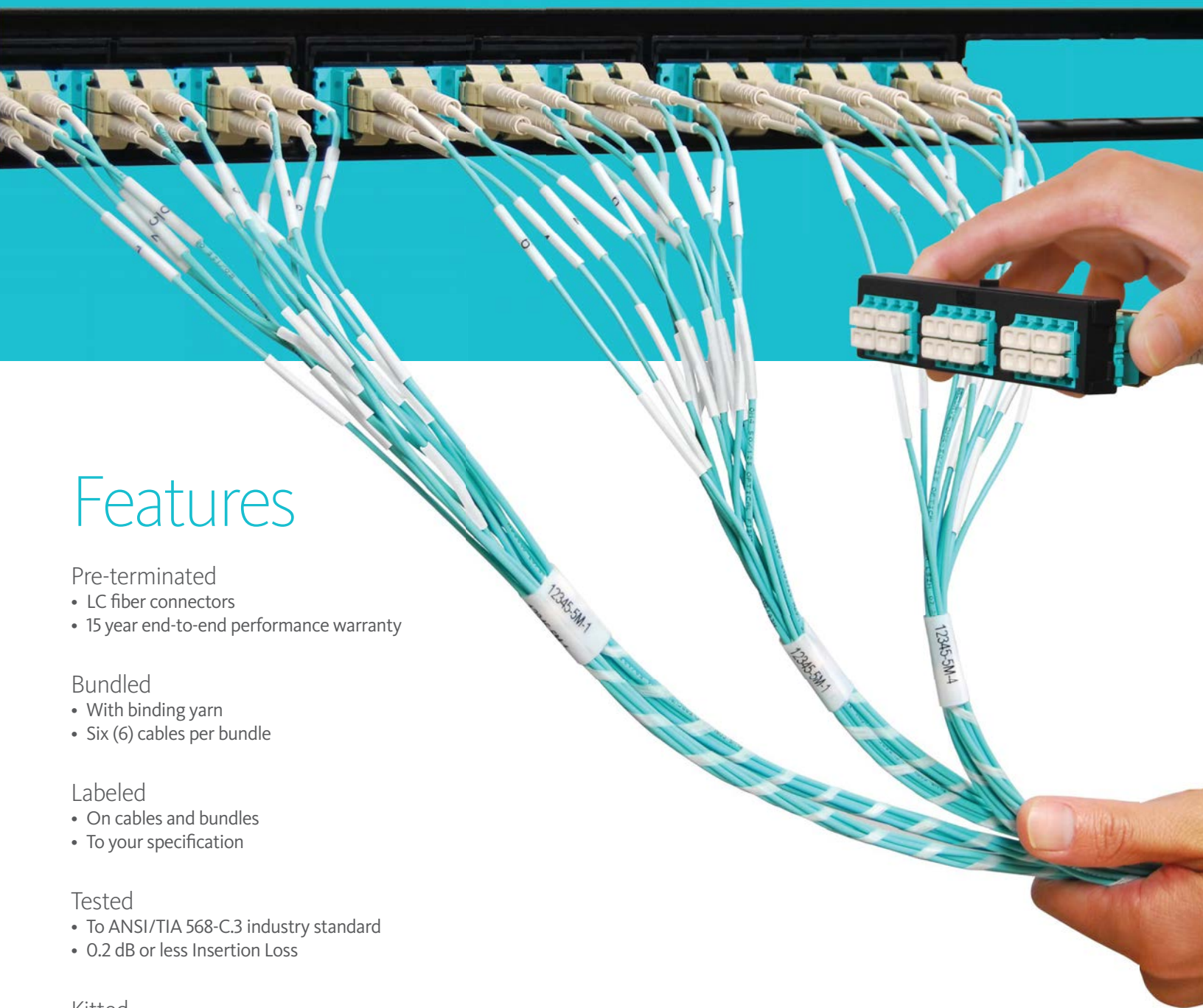


All-in-One Package

To save time from opening multiple packages.

Fiber

Pre-terminated Plug & Play Patch Panel Cabling System



Features

Pre-terminated

- LC fiber connectors
- 15 year end-to-end performance warranty

Bundled

- With binding yarn
- Six (6) cables per bundle

Labeled

- On cables and bundles
- To your specification

Tested

- To ANSI/TIA 568-C.3 industry standard
- 0.2 dB or less Insertion Loss

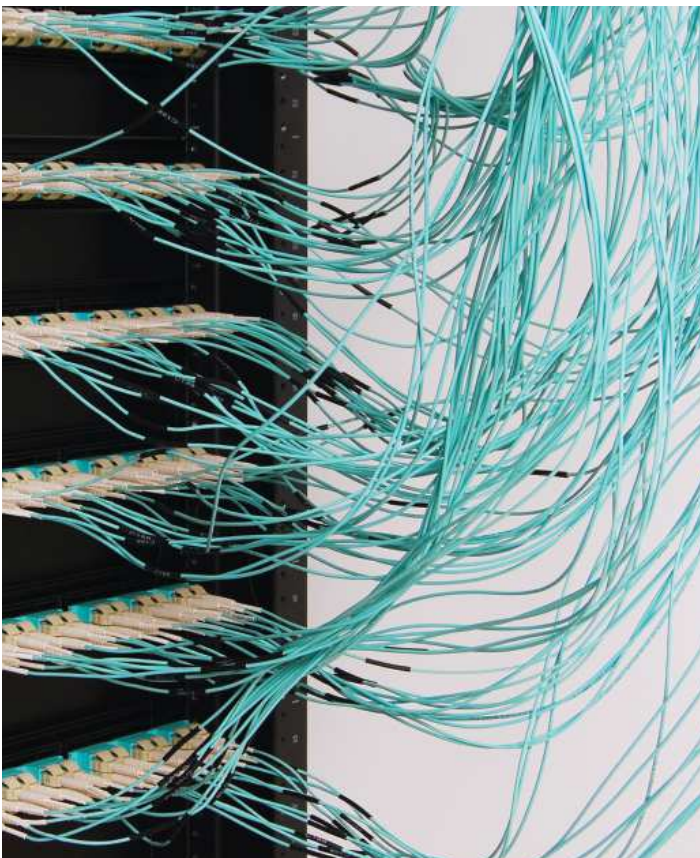
Kitted

- Pre-sort products into kits so they are easy to allocate
- To your specification



Ideal locations:

- Enterprise data centers
- Colocation facilities
- Server farms
- Cloud storage networks
- Telecommunication rooms



Traditional Cabling System



Pre-terminated Cabling System



Bezel to Bezel

For high density connectivity between patch panels.

Model # PFA

Bezel to Patch Cords

For connectivity between patch panel and a network switch.

Model # PFB

1. Choose Connectivity

Bezel to Bezel

Bezel to Patch Cords

Bezel to Outlet Box

MPO Cassette to Cassette

Model #

PFA

PFB

PFC

PFD

2. Choose Cable Rating

Riser-rated OFNR

Plenum-rated OFNP

Consider fire rating of material and airflow. Most data center environments can use riser-rated cable (OFNR). Use OFNR in vertical settings, such as cable running between floors through cable risers. Use plenum-rated cable (OFNP) in raised flooring systems, drop ceilings, and air handling ducts. Always consult with city or building authorities for the latest code before deciding the type of cable to use.



Bezel to Outlet Box

For connectivity between a patch panel and mobile box outlets.

Model # PFC

Cassette to Cassette

For high density connectivity between patch panels.

Model # PFD

3. Choose Bandwidth

10G OM4 (for up to 550 meters)

10G OM3 (for up to 300 meters)

1G 50/125 μm (for up to 550 meters)

1G 62.5/125 μm (for up to 275 meters)

Singlemode

Consider the maximum operating distance to support active equipment or devices throughout the entire network.

4. Choose Fibers + Length

Fiber (12 or 24 LC fibers)

Length (3 meters or more)

Consider accessibility to active equipment and the layout of the room when measuring, then round up to the nearest meter. We can custom build OM4 up to 550 meters and OM3 up to 300 meters.

Installation Step 1.

Install bracket panel. The panel fits 19 inch rack mount widths.



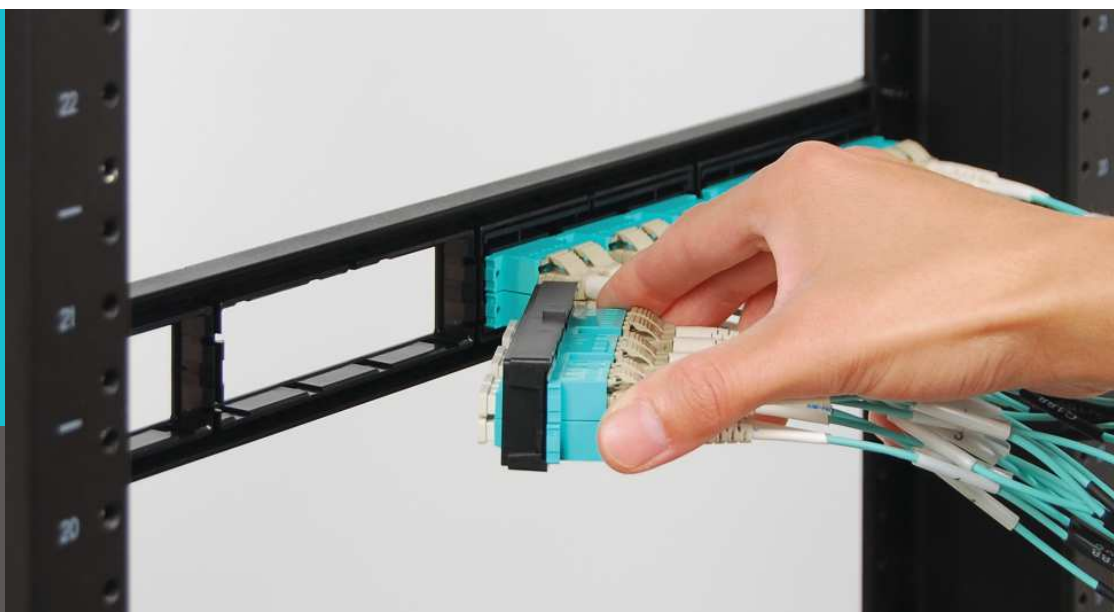
Step 2.

Open package.



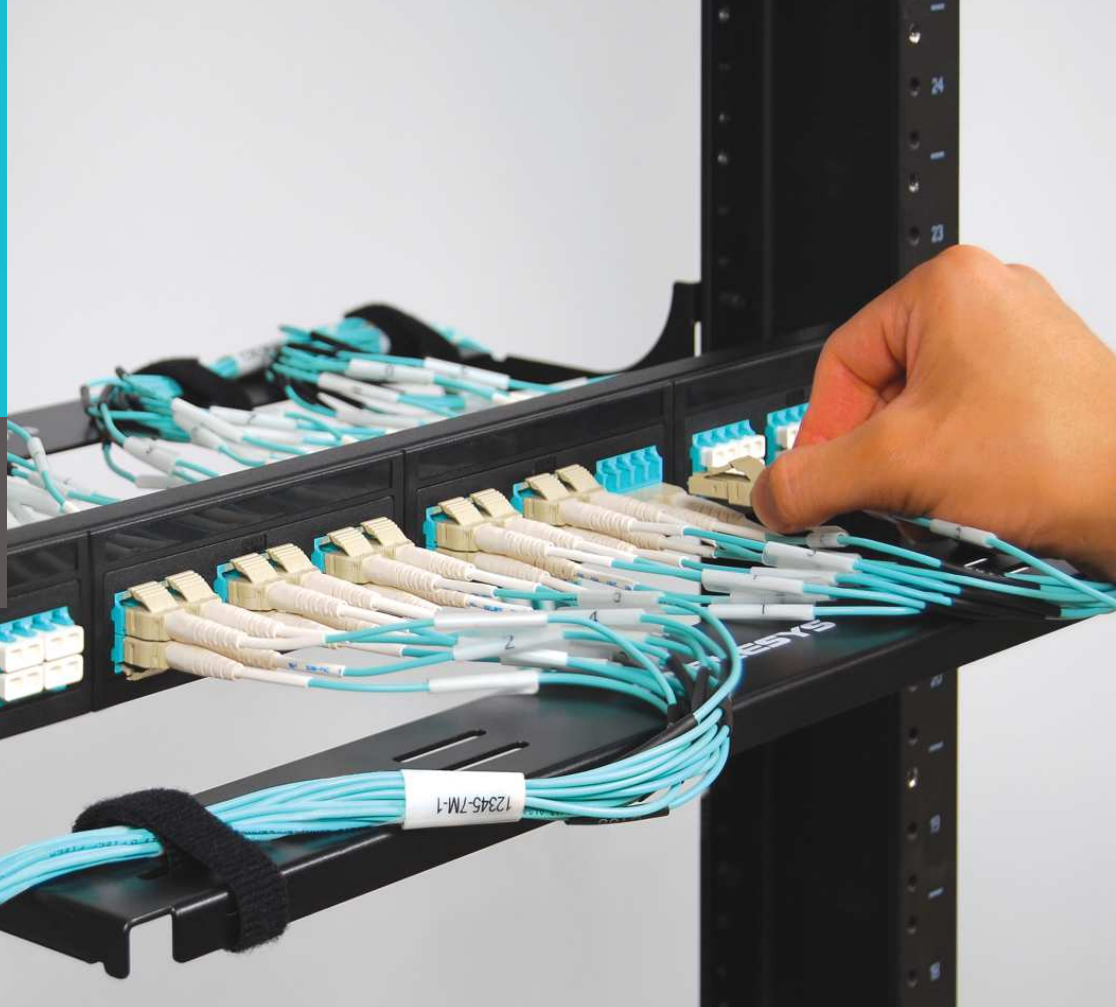
Step 3.

Snap in bezels. Done!



Cable Management Brackets

- Three (3) and five (5) inch depths
- Supports front and rear cables
- Fits 19 inch rack mount widths



Support Rear Cable

Use a five (5) inch bracket to support cable on the rear of the patch panel.



Bundle6™ Fiber Patch Cords

Model # BF6

We bundled and labeled six fiber patch cords to save you time and make patching easier.



1. Choose Bandwidth

10G OM4 OFNP*

10G OM3 OFNR

1G 50/125 μ m OFNP*

1G 62.5/125 μ m OFNP*

Singlemode OFNP*

2. Choose Length

Standard (1 to 15 meters)

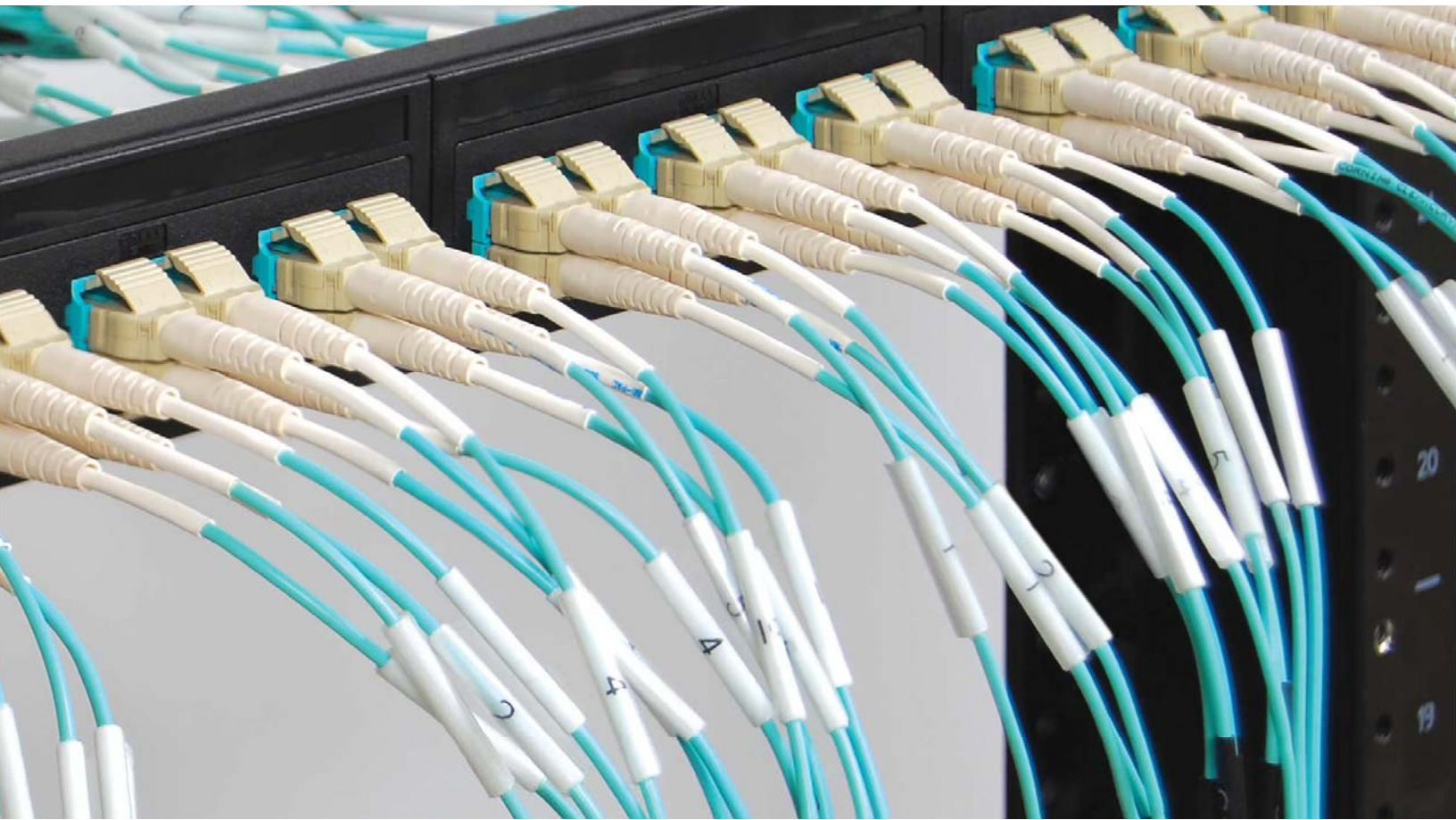
Custom (1 meter or more)

*Available in custom length only



Bundled

To route cables faster. Wrap is removable.



Labeled

To easily identify cables.



All-in-One Package

To save time from opening multiple packages.

Data Center Pre-terminated Patch Panel System



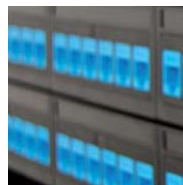
cablesys.com/pnp

CABLESYS

Connect with us on cablesys.com/linkedin 

800.555.7176 cablesys.com cs@cablesys.com

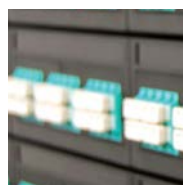
2100 East Valencia Drive, Suite D, Fullerton, CA 92831 USA



Patch Panels
Plug & Play Installation



10G + Gigabit



Patch Cords
Bundled + Labeled

